

# THE CENTER FOR THE PERFORMING ARTS

Tania Castoverde Moskalenko, President/CEO Michael Feinstein, Artistic Director  
355 City Center Drive Carmel, IN 46032 P 317.660.3373 F 317.660.3374 TheCenterPresents.org

Technical Specifications for  
**The Tarkington**  
at the Center for the Performing Arts  
**This document is subject to change.**  
<http://www.thecenterfortheperformingarts.org/>

## Table of Contents

Staff contacts .....	2
General description .....	3
Important numbers .....	4
Driving directions.....	6
Miscellaneous equipment/soft goods .....	8
Hospitality.....	9
Electrics.....	11
Audio .....	14
Lineset schedule .....	18
Drawings .....	20

updated January 29, 2015

# THE CENTER FOR THE PERFORMING ARTS

Tania Castoverde Moskalenko, President/CEO Michael Feinstein, Artistic Director  
355 City Center Drive Carmel, IN 46032 P 317.660.3373 F 317.660.3374 TheCenterPresents.org

Technical Specifications for  
**The Tarkington**  
at the Center for the Performing Arts  
**This document is subject to change.**

**Stage door &  
loading dock/shipping address:**  
3 Center Green  
Carmel, IN 46032  
317-819-3525 (security at Palladium)

**Mailing address:**  
The Center for the Performing Arts  
355 City Center Dr  
Carmel, IN 46032  
317-660-3373  
317-660-3374 (fax)  
Time zone: Eastern

<http://www.thecenterfortheperformingarts.org>

## Staff Contacts

<p>Scheduling, backline, parking, general information:</p> <p>Jeff Steeg, Director of Production 317-819-3490 (o), 260-438-9053 (m) <a href="mailto:jsteeg@thecenterpresents.org">jsteeg@thecenterpresents.org</a></p>	<p>Travel, ground transportation, hotels, catering, hospitality:</p> <p>Ellen Kingston, Artist Concierge 317-695-4419 (m) <a href="mailto:ekingston@thecenterpresents.org">ekingston@thecenterpresents.org</a></p>
<p>Lighting/Audio:</p> <p>Joe Wisner, Lighting and Sound Technician 317-819-3497 (o) <a href="mailto:jwisner@thecenterfortheperformingarts.org">jwisner@thecenterfortheperformingarts.org</a></p>	<p>Box office/comp tickets:</p> <p>Brian Seitz, Patron Services Manager 317-819-3507 (o) <a href="mailto:bseitz@thecenterpresents.org">bseitz@thecenterpresents.org</a></p>
<p>Merchandise:</p> <p>Sharon Holyoak 317-819-3524 (o), 317-698-8251 (m) <a href="mailto:sholyoak@thecenterpresents.org">sholyoak@thecenterpresents.org</a></p>	



# THE CENTER FOR THE PERFORMING ARTS

Tania Castoverde Moskalenko, President/CEO   Michael Feinstein, Artistic Director  
355 City Center Drive Carmel, IN 46032   P 317.660.3373   F 317.660.3374   [TheCenterPresents.org](http://TheCenterPresents.org)

## General Description

The 500-seat proscenium theater is primarily used for drama, musicals, dance, lectures and variety presentations and completes the Center for the Performing Arts campus, which has become an inviting gathering place for the community.

The Tarkington is located in the same building as the Studio Theater and is across the Green from the Palladium concert hall and is adjacent to the Monon Greenway.

The Center for the Performing Arts is a smoke free campus.



# THE CENTER FOR THE PERFORMING ARTS

Tania Castoverde Moskalenko, President/CEO   Michael Feinstein, Artistic Director  
355 City Center Drive Carmel, IN 46032   P 317.660.3373   F 317.660.3374   TheCenterPresents.org

## Important numbers

Proscenium width: 41'-11"

Proscenium height: 23'-11 ½"

Plasterline to back wall: 44'-0"

Plasterline to orch pit (on ctr): 7'-5"

Plasterline to stage edge (on ctr – pit cover in place): 12'-4"

CL to SR wall: 34'-6"

CL to SL locking rail: 33'-6"

Orchestra pit size: approx. 400 sq ft

Orchestra pit depth: 10'-0"

Number of single purchase linesets: 52 (+ grand drape and valance)

Lineset distribution: 8" centers (see lineset schedule)

Batten length: 52'-0" + 3' extension on each side

Max load per lineset: 1,800 lbs.

Empty batten weight: 400 lbs

Low trim: 4'-0"

High trim: 61'-0"

Grid height: 67'-4"

Catwalk height: 31'-0"

Loading dock door: 11'-1" h X 11'-1" w

Scene dock door: 10'-0" h X 9'-11" w

Number of dressing rooms: 2 large with toilet and shower and 2 small with shower

Number of toilets (backstage): 4

Number of showers: 4



# THE CENTER FOR THE PERFORMING ARTS

Tania Castoverde Moskalenko, President/CEO Michael Feinstein, Artistic Director  
355 City Center Drive Carmel, IN 46032 P 317.660.3373 F 317.660.3374 TheCenterPresents.org

## **Stage door**

The stage door is located on the south side of the building adjacent to the loading dock.

## **Loading dock**

The loading dock is located on the south side of the building.

Loading door size: 11'-0" w X 11'-0" h

Stage level – 20' from stage - 90° left turn. Max length 23'-0" (loading door to wall).

## **Parking**

No truck/bus parking available

## **Internet**

Public Wi-Fi: CPA Guest – no password required.

## **Wardrobe Facilities**

1 washer, 1 dryer, steamer and irons as needed

## **Video Projection**

There is no in-house video projection equipment.

## **Orchestra Pit**

Approx size: 400 sq ft (useable space)

## **Orchestra Pit in-fill**

Wenger custom pit in-fill

- Three configurations:
  - Pit in-fill in a stage level
  - Pit in-fill at house level (-42")
  - Open with safety net (-10'-0")

# THE CENTER FOR THE PERFORMING ARTS

Tania Castoverde Moskalenko, President/CEO Michael Feinstein, Artistic Director  
355 City Center Drive Carmel, IN 46032 P 317.660.3373 F 317.660.3374 TheCenterPresents.org

## **Driving directions to the Center for the Performing Arts**

<http://www.thecenterfortheperformingarts.org/Plan-a-Visit/Map-Directions.aspx>

### **Truck – driving directions to the Center for the Performing Arts**

From I – 465 (north of Indianapolis) take the US 31/Meridian Street exit (#31) proceed north – 1.8 miles

Turn right (east) onto E 116<sup>th</sup> Street – 1.7 miles

Turn left (north) onto S Range Line Road – 1.0 miles

Turn left (west) onto City Center Drive – 0.25 miles

Turn left (south) onto 3<sup>rd</sup> Ave SW

Loading dock on south end of building

► **TRUCKS OVER 19,000 LBS. ARE NOT ALLOWED ON N KEYSTONE AVE**

► **THE E 126TH ST EXIT FROM N KEYSTONE AVE HAS A ROUNDABOUT**

---

### **From I – 465 Eastbound (north of Indianapolis)**

Take the US 31/N Meridian Street exit (#31) turn left (north) – 1.8 miles

Turn right (east) onto E 116<sup>th</sup> Street – 1.7 miles

Turn left (north) onto S Range Line Road – 1.0 miles

Turn left (west) onto City Center Drive – 0.25 miles

Turn left (south) onto 3<sup>rd</sup> Ave SW

---

### **From I – 465 Westbound (north of Indianapolis)**

Take the IN 431/N Keystone Ave exit (#33) turn right (north) – 3.3 miles

Take 126<sup>th</sup> Street exit

Turn left (west) onto E 126<sup>th</sup> Street (roundabout) – 1.3 miles

E 126<sup>th</sup> becomes City Center Drive at S Range Line Road

Turn left (south) onto 3<sup>rd</sup> Ave SW



**From Indianapolis International Airport (IND) – 35.8 miles – 46 minutes**

**Note the Interstates near the airport are under construction – the actual route may change due to construction**

Take I – 70 E exit from the airport

Merge onto I – 465 N

Merge onto I – 465 E

Take the US 31/N Meridian Street exit (#31) turn left (north) – 1.8 miles

Turn right (east) onto E 116<sup>th</sup> Street – 1.7 miles

Turn left (north) onto S Range Line Road – 1.0 miles

Turn left (west) onto City Center Drive – 0.25 miles

Turn left (south) onto 3<sup>rd</sup> Ave SW

The Palladium is on the SE corner of 3<sup>rd</sup> Ave SW and W City Center Drive

---

**From downtown Indianapolis – 15.6 miles – 30 minutes**

Take N Meridian Street north – 13.1 miles

Turn right (east) onto E 116<sup>th</sup> Street – 1.7 miles

Turn left (north) onto S Range Line Road – 1.0 miles

Turn left (west) onto City Center Drive – 0.25 miles

Turn left (south) onto 3<sup>rd</sup> Ave SW

The Palladium is on the SE corner of 3<sup>rd</sup> Ave SW and W City Center Drive

---

**From Renaissance Hotel Carmel – 1.5 miles – 4 minutes**

Exit the parking lot – go straight onto W City Center Drive – 1.5 miles

The Palladium is on the SE corner of 3<sup>rd</sup> Ave SW and City Center Drive

Turn right onto 3<sup>rd</sup> Ave SW

*Mileage and times are estimated*

# THE CENTER FOR THE PERFORMING ARTS

Tania Castoverde Moskalenko, President/CEO Michael Feinstein, Artistic Director  
355 City Center Drive Carmel, IN 46032 P 317.660.3373 F 317.660.3374 TheCenterPresents.org

## Soft Goods

- Grand drape (travels or guillotine): 2 each @ 25'-6" h X 27'-0" w – 100% fullness
- Grand valance: 1 @ 5'-0" h X 52'-0" w – 100% fullness
- Borders: 5 each @ 8'-0" h X 58'-0" w – flat
- Legs: 10 each @ 26'-0" h X 10'-0" w – flat
- Black out drop: 2 each @ 26'-0" h X 32'-0" w – flat
- Black scrim (w/bottom pipe): 30'-0" h X 58'-0" w
- Rosco twin white RP screen (cyc – w/bottom pipe): 30'-0" h X 58'-0" w

## Dance Floor

- Harlequin Liberty LatchLoc – portable sprung panel flooring – 48' - 0" w X 32' - 0" d
- Harlequin Reversible (black/white) roll out floor – 48' - 0" w X 32' - 0" d

## Misc Equipment

- 1 – Genie AWP 36 – 36' h AC(power) work platform (shared with the Studio Theater)
- 1 – 12' step ladder
- 1 – 8' step ladder

## Musician's chairs and music stands

- 25 – Wenger musician's chair – black
- 5 – Wenger cello chairs – black
- 30 – Manhasset music stands – black
- 40 – Manhasset music stand lights – black



# THE CENTER FOR THE PERFORMING ARTS

Tania Castoverde Moskalenko, President/CEO Michael Feinstein, Artistic Director  
355 City Center Drive Carmel, IN 46032 P 317.660.3373 F 317.660.3374 TheCenterPresents.org

## Hospitality

- Please contact Ellen Kingston to advance logistics for ground transport, travel, catering and hospitality.
- Below is a list of local amenities around the venue.

<b>Restaurants</b>			
Grille 39	11925 N. Meridian St. (Renaissance Hotel)		(317) 816-0777
	High-end dining; steaks, seafood, pasta	Elegant Ambience	\$\$\$
Max & Erma's	12195 N. Meridian St.		(317) 705-9788
	Pub food; burgers, soups, salads	Casual Atmosphere	\$\$
Brockway Pub	12525 N. Meridian St.		(317) 669-8080
	Irish pub; burgers, entrees, salads	Casual Atmosphere	\$\$
Matt the Miller's	11 City Center Drive		(317) 805-1860
	Entrees, salads, soups	Upscale Pub	\$\$\$
Woody's	40 East Main Street		(317) 553-4444
	Entrees, sandwiches, soups	High-End Casual	\$\$\$
Le Peep	12213 N. Meridian		(317) 580-9193
	Breakfast/Lunch	Casual Atmosphere	\$\$
Yats	12545 Old Meridian		(317) 581-1881
	Cajun/Creole	Casual Atmosphere	\$
Thai Castle	19 E. 126th Street		(317) 575-8421
	Thai	Casual Atmosphere	\$
China Express	170 E. Carmel Drive		(317) 848-0189
	Chinese Dine-In/Carryout	Casual Atmosphere	\$
Bub's Burgers	210 W. Main Street		(317) 706-2827
	Award-winning burger, fries, rings	Casual Atmosphere	\$\$
Bazbeaux Pizza	111 W. Main Street		(317) 848-4488
	Artisanal Pizzas	Casual Atmosphere	\$\$

# THE CENTER FOR THE PERFORMING ARTS

Tania Castoverde Moskalenko, President/CEO Michael Feinstein, Artistic Director  
355 City Center Drive Carmel, IN 46032 P 317.660.3373 F 317.660.3374 TheCenterPresents.org

<b>General</b>			
Meijer	1424 W. Carmel Drive	24 Hours	(317) 573-8300
Target	1300 E. 86th Street		(317) 810-0044
<b>Drugstores</b>			
CVS	1421 S. Rangeline Road	24 Hours	(317) 844-2775
Walgreen's	1424 S. Rangeline Road	24 Hours	(317) 571-1176
<b>Grocery Stores</b>			
Earth Fare	1392 S. Rangeline Road	Health Food	(317) 575-1741
Whole Foods	14598 Clay Terrace Blvd.	Health Food	(317) 569-1517
Whole Foods	1300 E. 86th Street	Health Food	(317) 706-0900
Kroger	1217 S. Rangeline Road	General Grocery	(317) 846-4818
<b>Liquor Stores</b>			
Big Red Liquors	1111 E. 86th Street		(317) 259-9463
Payless Liquors	445 S. Rangeline Road		(317) 844-8484
Payless Liquors	726 Adams Street		(317) 815-5641
<b>Banks</b>			
Chase Bank	200 E. Carmel Dr.		(317) 321-7477
Fifth Third Bank	205 E. Carmel Dr.		(317) 846-6109
<b>Car Services</b>			
Night Rides			(317) 373-6466
Carte Blanche			(317) 873-8600
<b>Shopping Malls</b>			
Keystone at the Crossing	8702 Keystone Crossing		(317) 574-4002
	High end chain stores: Saks, Pottery Barn, Williams Sonoma, etc.		
	Restaurants: Fridays, Cheesecake Factory, PF Chang		
Nora Plaza	1300 E. 86th Street		(317) 810-0044
	Chain Stores: Marshall's, Whole Foods, Starbucks		
Clay Terrace	14390 Clay Terrace Blvd.		(317) 818-0725
	Forever 21, Old Navy, DSW, Merrill's Shoes, Bath & Body Works, etc.		
	Restaurants: Café Patachou, Knoa Grill, Henry's Pub, Biaggi's		

# THE CENTER FOR THE PERFORMING ARTS

Tania Castoverde Moskalenko, President/CEO   Michael Feinstein, Artistic Director  
355 City Center Drive Carmel, IN 46032   P 317.660.3373   F 317.660.3374   TheCenterPresents.org

## Electrics

### Control

- ETC Eos with 2 Elo external touch-screen monitors.
  - ETC 20-fader wing extension
  - ETC radio remote focus unit
  - Remote Viewing Interface with 2 Elo touch-screen monitors
- ETC Net3 drops located throughout the venue; nodes available for DMX
- House lights run either through Paradigm Control, located in the lighting control booth and backstage right, or through Eos

### Dimmers

- 384 ETC Sensor 2.4k double high-rise dimmers located stage right, 3<sup>rd</sup> floor
  - 376 distributed to production lighting, dimmer per circuit
  - 12 dedicated to house lights
- 62 120V 20A non-dim relays

### Fixture Inventory

- 20 – Varilite VL1100TS (Tungsten-Shutter)
- 60 – OceanOptics Seachanger CMYG Color Engines
- 80 – Source 4 19deg ERS, 750W
- 120 – Source 4 26deg ERS, 750W
- 100 – Source 4 36deg ERS, 750W
- 10 – Source 4 50deg ERS, 750W
- 10 – Source 4 70deg ERS, 750W
- 10 – Source 4 90deg ERS, 750W
- 30 – Source 4 PARs with lens kits, 750W
  - 8 barn doors available
- 20 ETC Selador Vivid-R strip lights, 44”
- 8 ETC Selador Vivid-R strip lights, 22”
  - 80 degree vertical and 30 degree horizontal diffusion frames available for all Seladors

### Accessories

- 1 - LeMaitre Radiance Hazer
- 2 - Aquafoggers
- 48 – 18” sidearms, one tee
- 100 – template holders, size A
- 50 – template holders, size B
- 6 – Source 4 Iris Kits

# THE CENTER FOR THE PERFORMING ARTS

Tania Castoverde Moskalenko, President/CEO Michael Feinstein, Artistic Director  
355 City Center Drive Carmel, IN 46032 P 317.660.3373 F 317.660.3374 TheCenterPresents.org

## Hang and Circuit Positions

A repertory lighting plot is available upon request. The Tarkington does not have dedicated electrics; however, as the rep plot is always in the air, designers are encouraged to consider those linesets as electrics and add or subtract as necessary.

- Front of House
  - Far Catwalk: 6 stage pin, 2 non-dim circuits
  - Mid Catwalk: 40 stage pin, 4 non-dim circuits
  - Near Catwalk: 24 stage pin, 4 non-dim circuits
  - Box booms (HL and HR): 12 stage pin, 2 non-dim circuits each
- Onstage
  - Apron boom: 12 stage pin, 2 non-dim circuits each
  - Instead of raceways, the Tarkington holds a series of breakout boxes, each with 6 stage pin and 1 non-dim circuit, that can move between battens if necessary.
    - 24 boxes are available for use on battens
    - 4 boxes per side are attached to lighting ladders that hang from the gallery. These ladders are permanent and too heavy to be moved, beginning at 12'6" above the deck.
  - Gallery (SL and SR): 16 stage pin, 4 non-dim circuits
  - Booms: 4 (10') booms with 50 pound bases are available per side and usually powered from the gallery circuits.
  - Floor circuits
    - Downstage (SL and SR): 5 stage pin, 1 non-dim circuits
    - Upstage (SL and SR): 6 stage pin, 1 non-dim circuits

## Company Switches / Power Disconnects

Three-phase 120/208VAC company switches are located throughout the building. All switches contain both lugs for tails and cam-lock connectors (all female); male-to-male ground and neutral turnarounds are available upon request. **All feeder cable used must be rated at or above the capacity of the switch as follows:**

- 400A switch: 4/0 minimum
- 200A switch: 1/0 minimum, 2/0 preferred
- **Per NEC Table 310.17, underrated feeder is not permitted for use on the grounds of this facility.** If unused in other venues, 100' each of 2/0 and 4/0 is available in house.

Switch Locations:

- 1 – 400A upstage left, stage level
- 1 – 200A fused disconnect, downstage right (*audio only*)
- 1 – 400A mid-stage right on the third-floor catwalk



# THE CENTER FOR THE PERFORMING ARTS

Tania Castoverde Moskalenko, President/CEO Michael Feinstein, Artistic Director  
355 City Center Drive Carmel, IN 46032 P 317.660.3373 F 317.660.3374 TheCenterPresents.org

## Data and power distribution

- 26 ETC Net3 2-port gateway
- 1 ETC Net3 4-port gateway
- Ethercon Cable
  - 15 – 2' Ethercon
  - 5 – 5' Ethercon
  - 4 – 10' Ethercon
  - 3 – 25' Ethercon
  - 2 – 50' Ethercon
  - 16 – 100' Ethercon
- Stage Pin Cable (20A 2P&G)
  - 40 – stage pin 2-fer
  - 50 – 5' stage pin
  - 40 – 10' stage pin
  - 30 – 15' stage pin
  - 30 – 20' stage pin
  - 20 – 25' stage pin
  - 20 – 50' stage pin
- Multi Cable
  - 7 – 50'
  - 1 – 75'
  - 1 – 100'
  - 8 – 6-circuit male stage pin break-in
  - 8 – 6-circuit female stage pin break-out
- DMX Cable
  - 60 – 5' DMX
  - 30 – 7.5' DMX
  - 60 – 10' DMX
  - 16 – 15' DMX
  - 30 – 25' DMX
  - 5 – 50' DMX
  - 12 – DMX terminator
  - 4 – DMX male to male turnaround
  - 4 – DMX 5-pin M to 3-pin F adapter
  - 4 – DMX 5-pin F to 3-pin M adapter
- Edison Cable (15A NEMA 5-15 U-ground)
  - 5 – 10'
  - 5 – 25'
  - 5 – 50'
  - 2 – 100'
- L5-20
  - 15 – 10'
  - 15 – 25'
  - 5 – 50'
- Adapters
  - 10 – male Edison to female L5-20
  - 10 – male L5-20 to female Edison
  - 10 – male stage pin to female L5-20
  - 10 – male L5-20 to female stage pin
  - 10 – male stage pin to female Edison
  - 10 – male Edison to female stage pin

# THE CENTER FOR THE PERFORMING ARTS

Tania Castoverde Moskalenko, President/CEO   Michael Feinstein, Artistic Director  
355 City Center Drive Carmel, IN 46032   P 317.660.3373   F 317.660.3374   TheCenterPresents.org

## Audio

### General Information

- The speaker system is controlled via (1) Soundweb London BLU-800 and (2) BLU-120s.
- The Front of House mix position is located on house right at the back.
- There are no pass-throughs for cabling, so if running a snake is desired there needs to be adequate length, 200 to 300 feet.

### House Mix Position

- Consoles:
  - FOH
    - DigiCo SD8 (60 channel, mono or stereo) at FOH
      - (2) 8 channel analog output cards
      - (1) AES EBU card
- Playback Rack:
  - (2) Tascam CD01UPro CD Players
  - (1) Denon DNF650 Digital Recorder
- Computer:
  - (1) Apple Mac Book Pro (6,1)
    - QLAB Pro Playback Software
  - (1) RME Madiface

### Main Amplified Speaker System

- The system is designed as a variable LCR system that utilizes a flown system and stage mounted front fills. All speakers are Meyer Sound.
- Center Cluster – Flown
  - (2) UPQ-2P Main
  - (1) UPJ-1P Down Fill
- Left/Right – Flown
  - (1) UPQ-1P Mains
  - (1) 600HP Subs
- Delays – Flown
  - (2) UPJ-1P Midway Through House
  - (1) UPM-1P VIP Box
- Front Fills – Stage Mounted
  - (7) MM-4

# THE CENTER FOR THE PERFORMING ARTS

Tania Castoverde Moskalenko, President/CEO Michael Feinstein, Artistic Director  
355 City Center Drive Carmel, IN 46032 P 317.660.3373 F 317.660.3374 TheCenterPresents.org

## Monitor Speakers

- Meyer Sound
  - (4) UPM-1P
  - (4) UPM-1P
    - These are flown as side fills in lanes 1 and 3.
- Anchor
  - (2) AN-1000x

## Communication System (Clear-Com)

- Permanently Installed
  - (2) RM-704 4-channel station
    - (1) at stage manager's console
    - (1) at stage manager's pendant
  - (1) SB-704 4-channel station and matrix in amp room
- Portable system
  - (5) KB-702 Speaker stations
  - (5) RS-602 dual channel belt packs
  - (10) RS-601 single channel belt packs
  - (8) HME Pro850 System belt packs
    - Wired to channels A&B of Clear-com system
  - Headsets
    - (12) CC-95 Single Muff
    - (2) CC-260 Double Muff
    - (6) CC-25 Lightweight
    - (2) HS-6 Telephone

## Program Feed and Paging

- House and backstage program feed is supplied through a program mic, dedicated preamp, and DA. The feed covers backstage, public areas, dressing rooms, green room, and basement areas.
- Program and paging is controlled by Symetrix processors.
- Paging can be made from any House Manager Position, Stage Manager Rack, or Stage Manager Pendant. Coverage for paging is the same as program feed.

# THE CENTER FOR THE PERFORMING ARTS

Tania Castoverde Moskalenko, President/CEO Michael Feinstein, Artistic Director  
355 City Center Drive Carmel, IN 46032 P 317.660.3373 F 317.660.3374 TheCenterPresents.org

## Video

- Permanently installed at control booth level
  - Sony SSC-DC372 Color camera
  - Ikegami ICD-47 B&W camera
- Portable
  - Panasonic WV-BP3330 B&W camera
- These video feeds are available at the Stage Manager position via a Marshall dual LCD monitor.
- There are 2 LG LCD flat panel TVs located at mezzanine level that receive the color camera feed.
- There is (1) Orion 24LTC 24" LCD monitor located in the Tech Office that receives the color camera feed.

## Assistive Listening System

- Listen Technology
  - (20) LR-200-072 Receivers
  - (8) LA-165 Stereo headphones
  - (4) LA-166 Neck loop

## Microphones

- Program Mic:
  - Shure VP88
- Direct Boxes:
  - (8) Countryman Type 85 Active DI
  - (8) Radial J48 Active DI
- Wired Microphones:
  - AKG
    - (2) 414
  - Crown
    - (5) PCC160
  - Sennheiser
    - (1) e901
    - (1) e902
    - (4) e904
    - (6) 421
    - (4) MKH40



# THE CENTER FOR THE PERFORMING ARTS

Tania Castoverde Moskalenko, President/CEO Michael Feinstein, Artistic Director  
355 City Center Drive Carmel, IN 46032 P 317.660.3373 F 317.660.3374 TheCenterPresents.org

- Shure
  - (1) Beta 52
  - (6) Beta 58
  - (1) Beta 91
  - (6) SM 57
  - (6) SM 58
  - (1) SM 58s
- Wireless Microphones:
  - Sennheiser 2000 - Announcements
    - (2) SKM200-XP Handheld Transmitters with e965 capsules
    - These are located at FOH
  - Sennheiser SKM500 - Performance
    - (24) G3 Bodypack Transmitters
    - (30) Countryman B6 Elements (Tan)
    - (6) SKM500 Handheld Transmitters with e935 capsules
      - These share the same frequencies as the first (6) beltpacks
    - The receivers are housed in a portable rack that typically lives upstage right.

## Microphone Stands

- Atlas Round Base - Straight
  - (6) DS7E
  - (4) DMS7E
  - (6) DMS10E
  - (6) MS-12CE
  - (6) MS20E
- K&M Tripod Stands
  - (24) 251 - Black
- K&M Boom Arms
  - (52) 21140 - Black

## Audio/Video Tie Lines

- Combination panels and Multi-Mode Fiber are located throughout the building. Please contact house staff for details.

## Video Projection

- There is no in-house video projection equipment.



# THE CENTER FOR THE PERFORMING ARTS

Tania Castoverde Moskalenko, President/CEO Michael Feinstein, Artistic Director  
355 City Center Drive Carmel, IN 46032 P 317.660.3373 F 317.660.3374 TheCenterPresents.org

## Lineset Schedule

LINE	DEPTH	REP HANG	SHOW HANG	ARBOR CAP	WEIGHT	LOW	MID	HIGH
PL	0'0"							
FSC	6.5"							
Val	1'3"	Valance						
GD	2'7"	Main Drape			800#			
1	3'3"	#1 Border			75#			
2	3'10"	#1 Legs			75#			
3	4'7"							
4	5'2"	#1 Electric			550#			
5	5'10"							
6	6'6"							
7	7'3"	#2 Electric			850#			
8	7'10"							
9	8'7"							
10	9'2"							
11	9'10"							
12	10'6"	#2 Border			75#			
13	11'3"	#2 Legs			75#			
14	11'10"							
15	12'7"							
16	13'3"							
17	13'11"							
18	14'6"	#3 Electric			850#			
19	15'11"							
20	16'7"	#4 Electric			475#			
21	17'3"							
22	17'11"	#3 Border			75#			
23	18'7"	#3 Legs			75#			
24	19'3"							
25	19'11"							
26	20'7"							
27	21'3"							
28	21'11"	#5 Electric			850#			



# THE CENTER FOR THE PERFORMING ARTS

Tania Castoverde Moskalenko, President/CEO Michael Feinstein, Artistic Director

355 City Center Drive Carmel, IN 46032

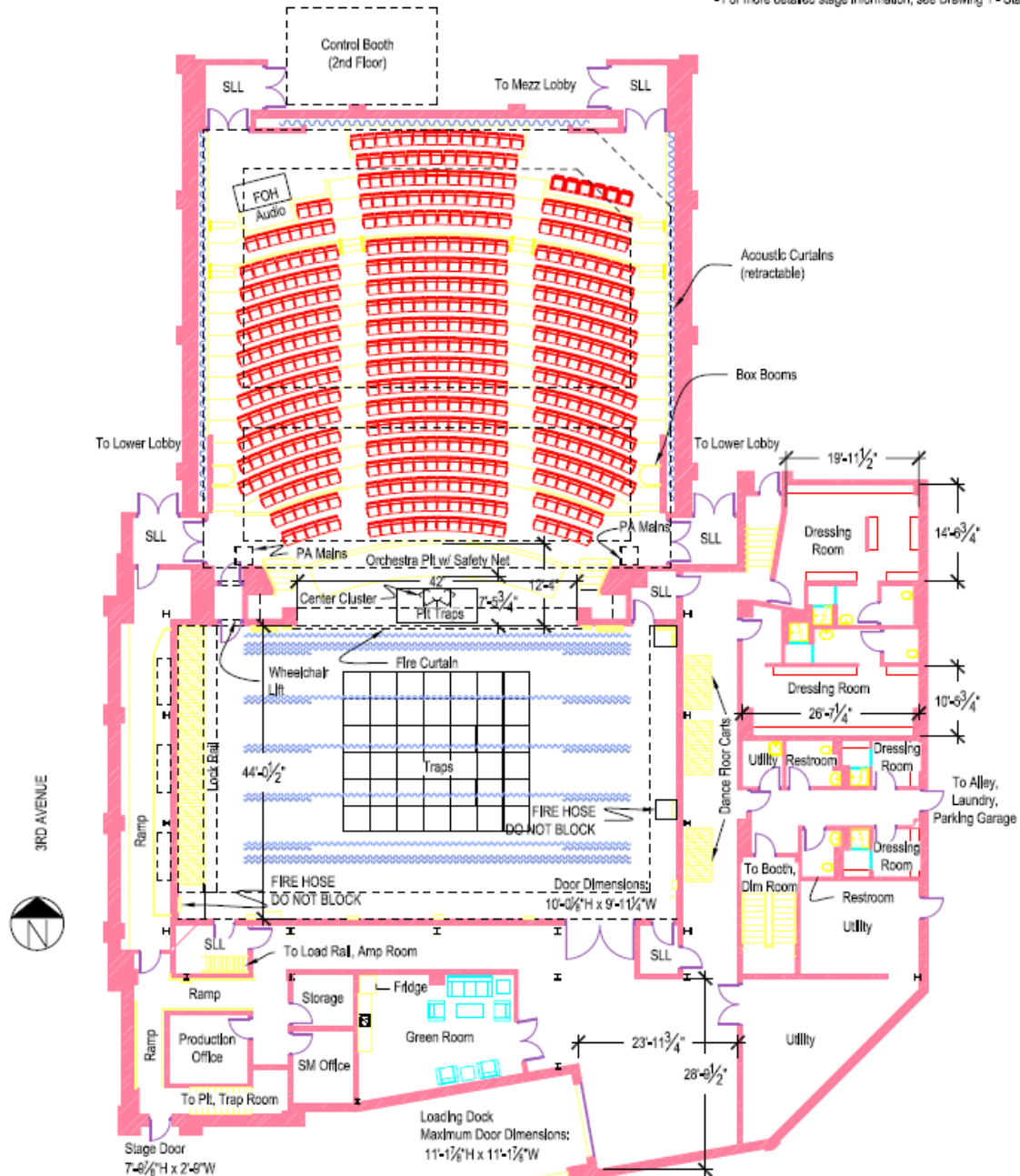
P 317.660.3373

F 317.660.3374

TheCenterPresents.org

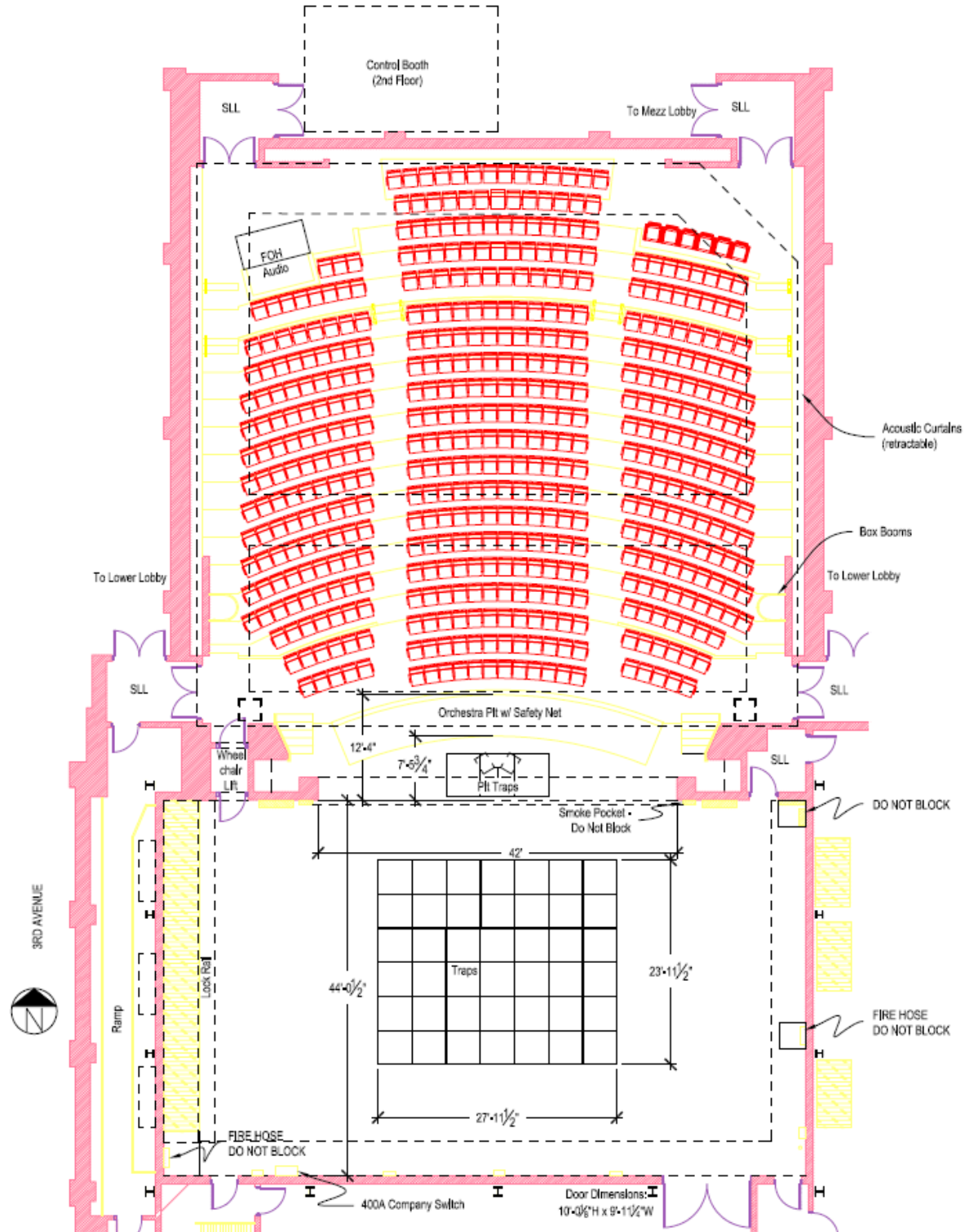
**NOTES:**

- Dressing rooms:
  - All dressing rooms contain counters with power receptacles and lighted makeup mirrors.
  - All dressing rooms have private showers.
  - 2 large dressing rooms have private toilets.
- Trap Room, Orchestra Pit, Stage, and House are accessible via a wheelchair lift DSL.
  - Weight limit: 750 lbs
  - Door: 6'-8 $\frac{1}{4}$ "H x 2'-0 $\frac{5}{8}$ "W
  - Platform (usable space): 4'-11 $\frac{1}{4}$ "D x 2'-3 $\frac{3}{8}$ "W
- For more detailed stage information, see Drawing 1 - Stage Plan



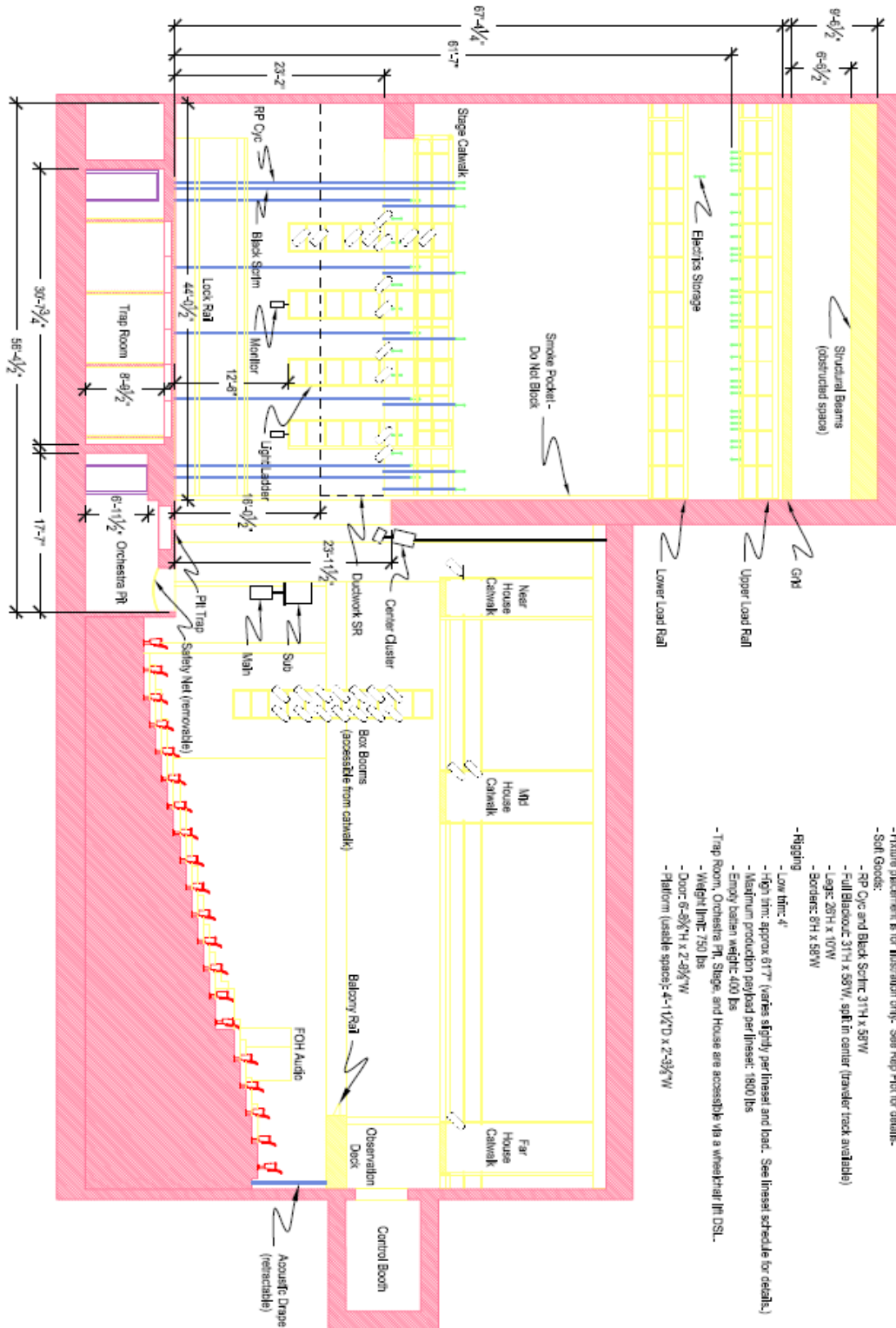
# THE CENTER FOR THE PERFORMING ARTS

Tania Castoverde Moskalkeno, President/CEO   Michael Feinstein, Artistic Director  
 355 City Center Drive Carmel, IN 46032   P 317.660.3373   F 317.660.3374   TheCenterPresents.org



# THE CENTER FOR THE PERFORMING ARTS

Tania Castoverde Moskalenko, President/CEO Michael Feinstein, Artistic Director  
 355 City Center Drive Carmel, IN 46032 P 317.660.3373 F 317.660.3374 TheCenterPresents.org



- NOTES
- Fixture placement & for illustration only. See Rig Plot for details.
  - Soft Goods:
    - RP C/Oc and Black Scrim 31'H x 50'W
    - Full Blackout 31'H x 50'W, split in center (traveler track available)
    - Legs: 20'H x 10'W
    - Borders: 8'H x 50'W
  - Rigging
    - Low line: 4'
    - High line: approx 61'7" (varies slightly per line set and load. See line set schedule for details.)
    - Maximum production payload per line set: 1800 lbs
    - Empty catwalk weight: 400 lbs
    - Trap Room, Orchestra Pit, Stage, and House are accessible via a wheelchair (in DSL).
    - Weight limit: 750 lbs
    - Door: 6'-0 1/2" H x 2'-9 3/4" W
    - Platform (usable space): 4'-11 1/2" D x 2'-9 3/4" W

