

# THE CENTER FOR THE PERFORMING ARTS

Tania Castoverde Moskalenko, President/CEO Michael Feinstein, Artistic Director  
355 City Center Drive Carmel, IN 46032 P 317.660.3373 F 317.660.3374 TheCenterPresents.org

## Technical Specifications for **The Studio Theater** at the Center for the Performing Arts

### Table of Contents

Staff contacts .....	2
General description .....	3
Driving directions.....	5
Miscellaneous equipment.....	7
Hospitality.....	8
Electrics.....	10
Audio .....	13
Drawings .....	17

**Updated January 23, 2015**

# THE CENTER FOR THE PERFORMING ARTS

Tania Castoverde Moskalenko, President/CEO Michael Feinstein, Artistic Director  
355 City Center Drive Carmel, IN 46032 P 317.660.3373 F 317.660.3374 TheCenterPresents.org

## Technical Specifications for **The Studio Theater** at the Center for the Performing Arts

### Shipping address:

4 Center Green  
Carmel, IN 46032  
317-819-3525

### Mailing address:

The Center for the Performing Arts  
355 City Center Dr  
Carmel, IN 46032  
317-660-3373  
317-660-3374 (fax)  
Time zone: Eastern

<http://www.thecenterfortheperformingarts.org/index.aspx>

### Staff Contacts

<p>Scheduling, backline, parking, general information:</p> <p>Jeff Steeg, Director of Production 317-819-3490 (o), 260-438-9053 (m) <a href="mailto:jsteeg@thecenterfortheperformingarts.org">jsteeg@thecenterfortheperformingarts.org</a></p>	<p>Travel, ground transportation, hotels, catering, hospitality:</p> <p>Ellen Kingston, Artist Concierge 317-695-4419 (m) <a href="mailto:ekingston@thecenterfortheperformingarts.org">ekingston@thecenterfortheperformingarts.org</a></p>
<p>Lighting/Audio:</p> <p>Joe Wisner, Lighting and Sound Technician 317-819-3497 (o) <a href="mailto:jwisner@thecenterfortheperformingarts.org">jwisner@thecenterfortheperformingarts.org</a></p>	<p>Box office/comp tickets:</p> <p>Brian Seitz, Patron Services Manager 317-819-3507 (o) <a href="mailto:bseitz@thecenterfortheperformingarts.org">bseitz@thecenterfortheperformingarts.org</a></p>
<p>Merchandise:</p> <p>Sharon Holyoak 317-819-3524 (o), 317-698-8251 (m) <a href="mailto:sholyoak@thecenterfortheperformingarts.org">sholyoak@thecenterfortheperformingarts.org</a></p>	

# THE CENTER FOR THE PERFORMING ARTS

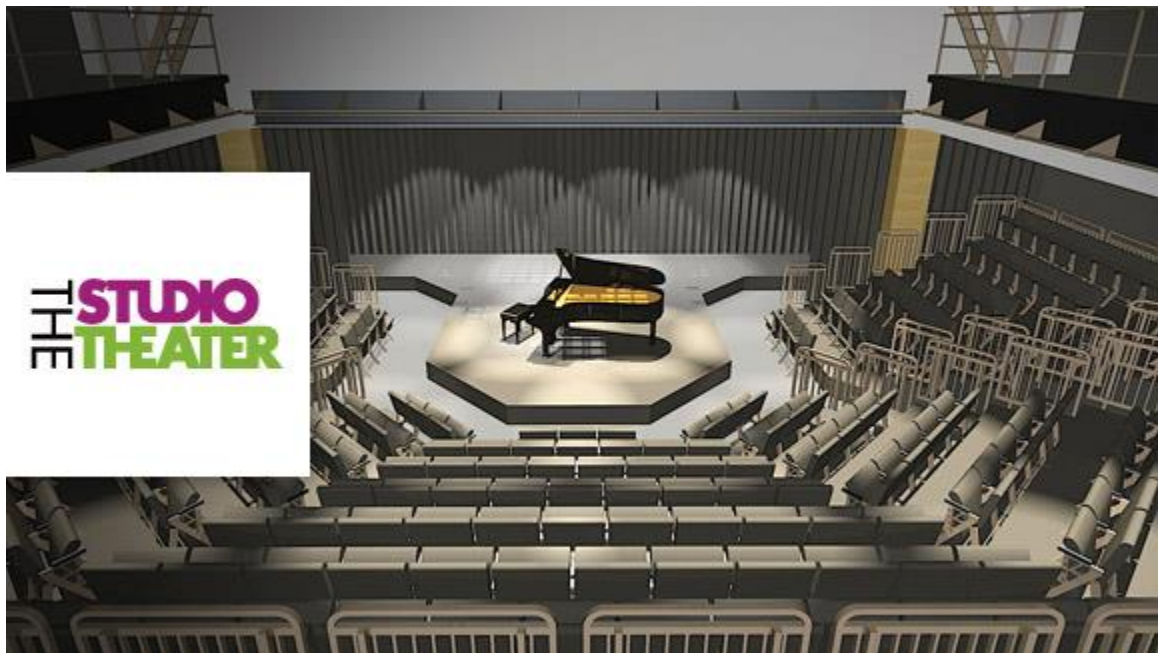
Tania Castoverde Moskalkenko, President/CEO Michael Feinstein, Artistic Director  
355 City Center Drive Carmel, IN 46032 P 317.660.3373 F 317.660.3374 TheCenterPresents.org

## General Description

The Studio Theater is a flexible theatrical space. The theater has four seating/stage configurations: cabaret, proscenium, round and thrust.

The Studio Theater is across the Green from the Palladium concert hall and is adjacent to the Monon Greenway.

The Center for Performing Arts is a smoke free campus.



**Thrust seating configuration**

# THE CENTER FOR THE PERFORMING ARTS

Tania Castoverde Moskalenko, President/CEO   Michael Feinstein, Artistic Director  
355 City Center Drive Carmel, IN 46032   P 317.660.3373   F 317.660.3374   TheCenterPresents.org

## **Stage door**

The Studio Theater has no stage door.

## **Loading dock**

The Studio Theater loading area is located inside a parking structure. The parking structure's max height is 7' – 0".

## **Parking**

No truck/bus parking available

## **Internet**

Public Wi-Fi: CPA Guest – no password required.

## **Pianos**

1 Yamaha upright – tuned A-440

## **Wardrobe Facilities**

1 washer, 1 dryer

## **Video Projection**

There is no in-house video projection equipment.

# THE CENTER FOR THE PERFORMING ARTS

Tania Castoverde Moskalenko, President/CEO Michael Feinstein, Artistic Director  
355 City Center Drive Carmel, IN 46032 P 317.660.3373 F 317.660.3374 TheCenterPresents.org

## **Driving directions to the Center for the Performing Arts**

<http://www.thecenterfortheperformingarts.org/Plan-a-Visit/Map-Directions.aspx>

### **Truck – driving directions to the Center for the Performing Arts**

From I – 465 (north of Indianapolis) take the US 31/Meridian Street exit (#31) proceed north – 1.8 miles

Turn right (east) onto E 116<sup>th</sup> Street – 1.7 miles

Turn left (north) onto S Range Line Road – 1.0 miles

Turn left (west) onto City Center Drive – 0.25 miles

Turn left (south) onto 3<sup>rd</sup> Ave SW .

▶ **TRUCKS OVER 19,000 LBS. ARE NOT ALLOWED ON N KEYSTONE AVE**

▶ **THE E 126TH ST EXIT FROM N KEYSTONE AVE HAS A ROUNDABOUT**

---

### **From I – 465 Eastbound (north of Indianapolis)**

Take the US 31/N Meridian Street exit (#31) turn left (north) – 1.8 miles

Turn right (east) onto E 116<sup>th</sup> Street – 1.7 miles

Turn left (north) onto S Range Line Road – 1.0 miles

Turn left (west) onto City Center Drive – 0.25 miles

Turn left (south) onto 3<sup>rd</sup> Ave SW

---

### **From I – 465 Westbound (north of Indianapolis)**

Take the IN 431/N Keystone Ave exit (#33) turn right (north) – 3.3 miles

Take 126<sup>th</sup> Street exit

Turn left (west) onto E 126<sup>th</sup> Street (roundabout) – 1.3 miles

E 126<sup>th</sup> becomes City Center Drive at S Range Line Road

Turn left (south) onto 3<sup>rd</sup> Ave SW

Tania Castoverde Moskalenko, President/CEO Michael Feinstein, Artistic Director  
355 City Center Drive Carmel, IN 46032 P 317.660.3373 F 317.660.3374 TheCenterPresents.org

**From Indianapolis International Airport (IND) – 35.8 miles – 46 minutes**

**Note the Interstates near the airport are under construction – the actual route may change due to construction**

Take I – 70 E exit from the airport

Merge onto I – 465 N

Merge onto I – 465 E

Take the US 31/N Meridian Street exit (#31) turn left (north) – 1.8 miles

Turn right (east) onto E 116<sup>th</sup> Street – 1.7 miles

Turn left (north) onto S Range Line Road – 1.0 miles

Turn left (west) onto City Center Drive – 0.25 miles

Turn left (south) onto 3<sup>rd</sup> Ave SW

The Studio Theater is on the SE corner of the circle drive on W City Center Drive.

---

**From downtown Indianapolis – 15.6 miles – 30 minutes**

Take N Meridian Street north – 13.1 miles

Turn right (east) onto E 116<sup>th</sup> Street – 1.7 miles

Turn left (north) onto S Range Line Road – 1.0 miles

Turn left (west) onto City Center Drive – 0.25 miles

Turn left (south) onto 3<sup>rd</sup> Ave SW

The Studio Theater is on the SE corner of the circle drive on W City Center Drive.

---

**From Renaissance Hotel Carmel – 1.5 miles – 4 minutes**

Exit the parking lot – go straight onto W City Center Drive – 1.5 miles

The Palladium is on the SE corner of 3<sup>rd</sup> Ave SW and City Center Drive

Turn right onto 3<sup>rd</sup> Ave SW

*Mileage and times are estimated*

# THE CENTER FOR THE PERFORMING ARTS

Tania Castoverde Moskalenko, President/CEO Michael Feinstein, Artistic Director  
355 City Center Drive Carmel, IN 46032 P 317.660.3373 F 317.660.3374 TheCenterPresents.org

## Risers

- 11 – 4 x 8 Wenger Versalite risers (6 legs per section)
- 3 – 4 x 6 Wenger Versalite risers (6 legs per section)
- 4 – 4 x 4 right triangle Versalite risers (3 legs per section)
- 96 – 12” legs

## Seating Risers

- Wenger Versalite carpeted risers – 4 seating configurations – see drawings

## Theater seats

- 238 – Wenger portable audience chairs

## Dance Floor

- Harlequin Studio Floor 42’ w x 24’ – 6” d

## Misc Equipment

- 1 – Genie AWP 36 – 36’ h AC(power) work platform (shared with Tarkington)
- 2 – 12’ step ladder

## Drapery

- 3 – 42’W x 4H – black borders – sewn flat
- 10 – 11’W x 21’H – black legs – sewn flat
- 1 – 42’W x 21’H – black backdrop – sewn flat
- 1 – 42’W x 21’H – white cyc – sewn flat

# THE CENTER FOR THE PERFORMING ARTS

Tania Castoverde Moskalenko, President/CEO Michael Feinstein, Artistic Director  
355 City Center Drive Carmel, IN 46032 P 317.660.3373 F 317.660.3374 TheCenterPresents.org

## Hospitality

- Please contact Ellen Kingston to advance logistics for ground transport, travel, catering and hospitality.
- Below is a list of local amenities around the venue.

<b>Restaurants</b>			
Grille 39	11925 N. Meridian St. (Renaissance Hotel)		(317) 816-0777
	High-end dining; steaks, seafood, pasta	Elegant Ambience	\$\$\$
Max & Erma's	12195 N. Meridian St.		(317) 705-9788
	Pub food; burgers, soups, salads	Casual Atmosphere	\$\$
Brockway Pub	12525 N. Meridian St.		(317) 669-8080
	Irish pub; burgers, entrees, salads	Casual Atmosphere	\$\$
Matt the Miller's	11 City Center Drive		(317) 805-1860
	Entrees, salads, soups	Upscale Pub	\$\$\$
Woody's	40 East Main Street		(317) 553-4444
	Entrees, sandwiches, soups	High-End Casual	\$\$\$
Le Peep	12213 N. Meridian		(317) 580-9193
	Breakfast/Lunch	Casual Atmosphere	\$\$
Yats	12545 Old Meridian		(317) 581-1881
	Cajun/Creole	Casual Atmosphere	\$
Thai Castle	19 E. 126th Street		(317) 575-8421
	Thai	Casual Atmosphere	\$
China Express	170 E. Carmel Drive		(317) 848-0189
	Chinese Dine-In/Carryout	Casual Atmosphere	\$
Bub's Burgers	210 W. Main Street		(317) 706-2827
	Award-winning burger, fries, rings	Casual Atmosphere	\$\$
Bazbeaux Pizza	111 W. Main Street		(317) 848-4488
	Artisanal Pizzas	Casual Atmosphere	\$\$



# THE CENTER FOR THE PERFORMING ARTS

Tania Castoverde Moskalenko, President/CEO Michael Feinstein, Artistic Director  
355 City Center Drive Carmel, IN 46032 P 317.660.3373 F 317.660.3374 TheCenterPresents.org

<b>General</b>			
Meijer	1424 W. Carmel Drive	24 Hours	(317) 573-8300
Target	1300 E. 86th Street		(317) 810-0044
<b>Drugstores</b>			
CVS	1421 S. Rangeline Road	24 Hours	(317) 844-2775
Walgreen's	1424 S. Rangeline Road	24 Hours	(317) 571-1176
<b>Grocery Stores</b>			
Earth Fare	1392 S. Rangeline Road	Health Food	(317) 575-1741
Whole Foods	14598 Clay Terrace Blvd.	Health Food	(317) 569-1517
Whole Foods	1300 E. 86th Street	Health Food	(317) 706-0900
Kroger	1217 S. Rangeline Road	General Grocery	(317) 846-4818
<b>Liquor Stores</b>			
Big Red Liquors	1111 E. 86th Street		(317) 259-9463
Payless Liquors	445 S. Rangeline Road		(317) 844-8484
Payless Liquors	726 Adams Street		(317) 815-5641
<b>Banks</b>			
Chase Bank	200 E. Carmel Dr.		(317) 321-7477
Fifth Third Bank	205 E. Carmel Dr.		(317) 846-6109
<b>Car Services</b>			
Night Rides			(317) 373-6466
Carte Blanche			(317) 873-8600
<b>Shopping Malls</b>			
Keystone at the Crossing	8702 Keystone Crossing		(317) 574-4002
	High end chain stores: Saks, Pottery Barn, Williams Sonoma, etc.		
	Restaurants: Fridays, Cheesecake Factory, PF Chang		
Nora Plaza	1300 E. 86th Street		(317) 810-0044
	Chain Stores: Marshall's, Whole Foods, Starbucks		
Clay Terrace	14390 Clay Terrace Blvd.		(317) 818-0725
	Forever 21, Old Navy, DSW, Merrill's Shoes, Bath & Body Works, etc.		
	Restaurants: Café Patachou, Knoa Grill, Henry's Pub, Biaggi's		

# THE CENTER FOR THE PERFORMING ARTS

Tania Castoverde Moskalenko, President/CEO Michael Feinstein, Artistic Director  
355 City Center Drive Carmel, IN 46032 P 317.660.3373 F 317.660.3374 TheCenterPresents.org

## Electrics

### Dimmers

- 96 ETC 2.4k double high-rise dimmers located on the upper level backstage.
  - 87 dedicated to production lighting, dimmer per circuit
  - 9 dedicated to house lights
- 18 - 120V 20A non-dim circuits

### Control

- 1 - ETC Element with 2 Elo external touchscreen monitors
- 1 - ETC radio remote focus unit.
- ETC Net3 drops located in the lighting control booth, outside the dimmer room, and on the first floor West wall (below the booth window)
- House lights run either through Paradigm Control, located in the lighting control booth and backstage left, or through Element.

### Fixtures

All fixtures are factory-painted black unless otherwise noted and include color frames, c-clamps, and safety cables as necessary.

- 6 – ETC Source Four 19-Degree
- 49 – ETC Source Four 26-Degree
- 26 – ETC Source Four 36-Degree
- Additional Lens Tubes
  - 8 – ETC Source Four 50-Degree Lens Tube
  - 6 – ETC Source Four 70-Degree Lens Tube
  - 4 – ETC Source Four 90-Degree Lens Tube
- 30 – Strand Selecon 6-inch Fresnel with barn doors
- 10 – L&E 6' 30 lamp strip light

### Hang and Circuit Positions

The Studio Theater is a flexible space with many varied hang positions. They are described below; however, a PDF color-coded venue layout is available which may be clearer. Please see drawings 2 through 4, included with this packet.

- **Grid:** There is a tension grid at approximately 21' over the majority of the space, suspended from the ceiling by 1-1/2" vertical schedule-40 pipe. Additional pipe and cheeseboroughs are available to create "battens" on the grid.
  - 48 – 18" stage pin pigtails are evenly spaced in sets of three across the grid ceiling.
  - 8 – 18" non-dim L5-20 pigtails are evenly spaced across the grid ceiling

# THE CENTER FOR THE PERFORMING ARTS

Tania Castoverde Moskalenko, President/CEO Michael Feinstein, Artistic Director  
355 City Center Drive Carmel, IN 46032 P 317.660.3373 F 317.660.3374 TheCenterPresents.org

- Pipe inventory (1-1/2" schedule-40):
  - 3 – 6'6" (permanently installed along East edge)
  - 1 – 10' (permanently installed along East edge)
  - 3 – 8' (permanently installed on East end)
  - 2 – 9'6" (permanently installed on West edge)
  - 12 – 9'6" (spans two grid squares)
  - 16 – 5' (spans one grid square or tees diagonally)
  - 6 – 7' (spans one grid square diagonally)
- Cheeseboroughs
  - 10 swivel
  - 50 rigid
- **Catwalk** (HL and HR): 6 stage pin and 2 non-dim circuits each
- **Apron Pipe:** 6 stage pin and 2 non-dim circuits (*these circuits are echoed on the back wall*)
- **Battens:** Four deadhung pipes on one side of the space hang at approximately 14' from the deck. Circuit boxes are spread evenly on the ceiling between pipes 1 and 2 and between pipes 3 and 4.
  - 24 stage pin circuits
  - 4 non-dim L5-20 circuits
- **Floor:** There are 6 stage pin and 2 non-dim L5-20 circuits on the back wall (*these circuits are echoed on the apron pipe*)
  - 2 – 12' booms with 50 pound bases are available

## Company Switches / Power Disconnects

Three-phase 120/208VAC company switches available in the space. All switches contain both lugs for tails and cam-lock connectors (all female); male-to-male ground and neutral turnarounds are available upon request. **All feeder cable used must be rated at or above the capacity of the switch as follows:**

- 400A switch: 4/0 minimum
- 100A switch (Audio): 1/0 minimum
- **Per NEC Table 310.17, underrated feeder is not permitted for use on the grounds of this facility.** If unused in other venues, 100' each of 2/0 and 4/0 is available in house.

## Switch Locations:

- Upper Level Hallway: 1 – 400A switch with double neutral
  - Cable track is available from this switch to the grid.
- South Gallery: 1 – 100A switch with single neutral



# THE CENTER FOR THE PERFORMING ARTS

Tania Castoverde Moskalenko, President/CEO Michael Feinstein, Artistic Director  
355 City Center Drive Carmel, IN 46032 P 317.660.3373 F 317.660.3374 TheCenterPresents.org

## Data Distribution

- DMX Cable
  - 10 – 5' DMX 5pin
  - 10 – 10' DMX 5pin
  - 10 – 25' DMX 5pin
  - 2 – 50' DMX 5pin
- Wireless DMX
  - 1 – City Theatrical SHoW Wireless DMX Transmitter
  - 2 – City Theatrical SHoW Wireless DMX Receiver

## Power Distribution

- Stage Pin Cable (20A 2P&G)
  - 40 – stage pin 2-fer
  - 20 – 5' stage pin
  - 60 – 10' stage pin
  - 25 – 15' stage pin
  - 15 – 25' stage pin
  - 5 – 50' stage pin
- L5-20 Cable (20A Twistlock)
  - 10 – 5' L5-20
- Edison Stage Power (15A NEMA 5-15 U-ground)
  - 20 – 10' Edison
  - 20 – 25' Edison
  - 5 – 50' Edison
- Adapters
  - 5 – male Edison to female L5-20
  - 5 – male L5-20 to female Edison
  - 5 – male stage pin to female L5-20
  - 5 – male L5-20 to female stage pin
  - 15 – male stage pin to female Edison
  - 10 – male Edison to female stage pin

## Audio

### General Information

- The Studio Theater does not rely on a specific audio setup. It was designed to be flexible to accommodate a wide variety of shows.
- FOH mix position is normally in a control booth on the West side of the theater overlooking the stage, although the theater has the infrastructure to set up FOH almost anywhere including the North and South catwalks.
- There is a 100 Amp company switch on the South wall catwalk, and Isolated Ground power at all combination panels throughout the theater.

### House Mix Position

- Consoles:
  - (2) Yamaha LS9-16 (16 in x 8 out)
    - Each console offers 16 analog XLR inputs and 8 analog XLR outputs.
    - The (2) consoles can be linked together via Cobranet to allow access to all 32 Input points on one desk. However, the gain staging is local to each console.
- Playback/Effects Rack
  - (2) Tascam CD01UPro CD players
  - (1) Denon DNF450R Solid State Audio Rec/Play

### Main Amplified Speaker System

- While The Studio Theater is designed as a flexible space, there is a rep speaker system installed which consists of the following flown equipment:
  - Center Seating Section - (2) Meyer UPA-1P
    - (2) Meyer UPA-1P on Center
    - (1) Meyer UPA-1P either side of Center
    - This is flown above the main center seating section
  - Side Fill Left/Right - (1) Meyer UPA-1P per side

### Additional Speakers

- (5) Meyer UPM-1p
- (2) Meyer UPA-1p
- (1) Meyer 600HP
- (4) Anchor AN100-X

# THE CENTER FOR THE PERFORMING ARTS

Tania Castoverde Moskalenko, President/CEO Michael Feinstein, Artistic Director  
355 City Center Drive Carmel, IN 46032 P 317.660.3373 F 317.660.3374 TheCenterPresents.org

## Speaker Hardware

- (2) Ultimate Support TS90B Speaker Tripod Stands
- (2) Meyer MYAUPM Mounting Yokes
- (6) Meyer MYAUPA Mounting Yokes

## Communication System (Clear-Com)

- Installed
  - (1) RM-704 4-channel station
    - Located on stage manager's pendant
  - (1) SB-704 4-channel station and matrix
    - (1) HME Pro850 Wireless System - Located in control booth
- Portable
  - Wireless com coverage to support space and main lobby
  - (2) KB-702 2-channel speaker stations
  - (14) RS-601 Single channel belt packs
  - (4) BP-850 Wireless dual channel belt packs
    - Wired to Channels A&B of Clearcom system
  - Headsets
    - (4) CC-25 Lightweight
    - (8) CC-95 Single-Muff
    - (2) CC-260 Double-Muff
    - (2) HS-6 Telephone

## Program Feed and Paging

- Control booth and lobby program feed is supplied via a DSP stem and house mic.
- Program and paging is controlled by Symetrix processors.
- Paging can be made from the control booth, or stage manager's pendant. Coverage for paging is the same as program feed.
- There is no coverage for program feed or paging in the support space.

## Video

- Wide-angle Stage Camera
  - (1) Panasonic WVCP280 Color CCD Camera
- Additional Cameras
  - (1) Sony SSCDC374 High Res Color Camera
  - (1) Sony EVIHD1 High Def Color Camera
    - Blackmagic HD-SDI to HDMI converter available
  - (1) Ikegami ICD47 Low Light B&W Camera

# THE CENTER FOR THE PERFORMING ARTS

Tania Castoverde Moskalenko, President/CEO Michael Feinstein, Artistic Director  
355 City Center Drive Carmel, IN 46032 P 317.660.3373 F 317.660.3374 TheCenterPresents.org

- Mounted video equipment in control booth
  - (3) Leitch VDA-16 video distribution
  - (1) Mediastar Evolution HD-SD encoder
  - (1) Kramer VS-81V video switcher
  - (1) Panasonic WV-LW1900 19" monitor
- A patch bay allows connection to combination panels throughout the theater

## Assistive Listening System

- Listen Technology
  - (8) LR 20000072 Receiver
  - (8) LA165 Headset
  - (2) LA166 Neckloop

## Microphones

- Program Mic
  - (1) Shure VP88
- Direct Boxes:
  - (3) Countryman Type 85 Active DI
  - (3) ProCo DB-1 Passive DI
- Wired Microphones:
  - Sennheiser
    - (4) MD421
    - (4) MKH40
  - Shure
    - (8) Beta 58
    - (6) SM 57
    - (4) SM 58
- Wireless Microphones:
  - Sennheiser SKM500
    - (8) G3 Beltpack Transmitters
    - (6) Countryman e6 Elements (Tan)
    - (8) SKM500 Handheld Transmitters with e965 Capsules
      - These share the same frequencies as the (8) beltpacks

# THE CENTER FOR THE PERFORMING ARTS

Tania Castoverde Moskalenko, President/CEO   Michael Feinstein, Artistic Director  
355 City Center Drive Carmel, IN 46032   P 317.660.3373   F 317.660.3374   TheCenterPresents.org

## Microphone Stands

- Atlas Round Base - Straight
  - (4) DS7E
  - (4) DMS7E
  - (2) DMS10E
  - (10) MS-12CE
  - (10) MS-20E
- K&M Tripod Stands
  - (10) 210/8 - Black
- K&M Boom Arms
  - (30) 21140 - Black

## Audio/Video Tie Lines

- Combination panels and Multi-Mode Fiber are located throughout the building. Please contact House Staff for details.

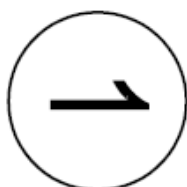
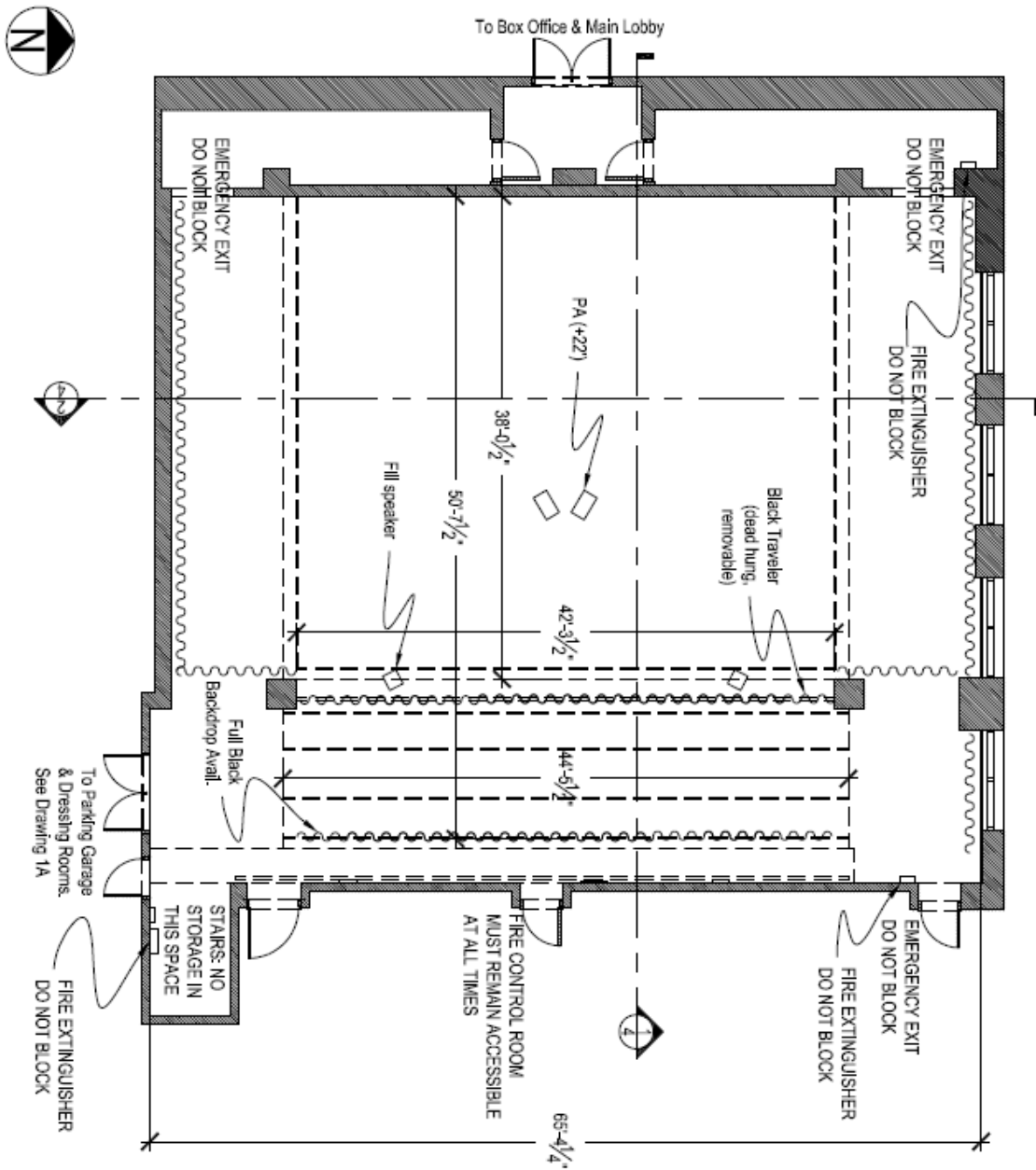
## Video Projection

- There is no in-house video projection equipment.



# THE CENTER FOR THE PERFORMING ARTS

Tania Castoverde Moskalenko, President/CEO Michael Feinstein, Artistic Director  
 355 City Center Drive Carmel, IN 46032 P 317.660.3373 F 317.660.3374 TheCenterPresents.org



1st Floor Plan  
 The Studio Theater  
 at The Center  
 for the Performing Arts

Scale:  $\frac{3}{32}'' = 1'-0''$

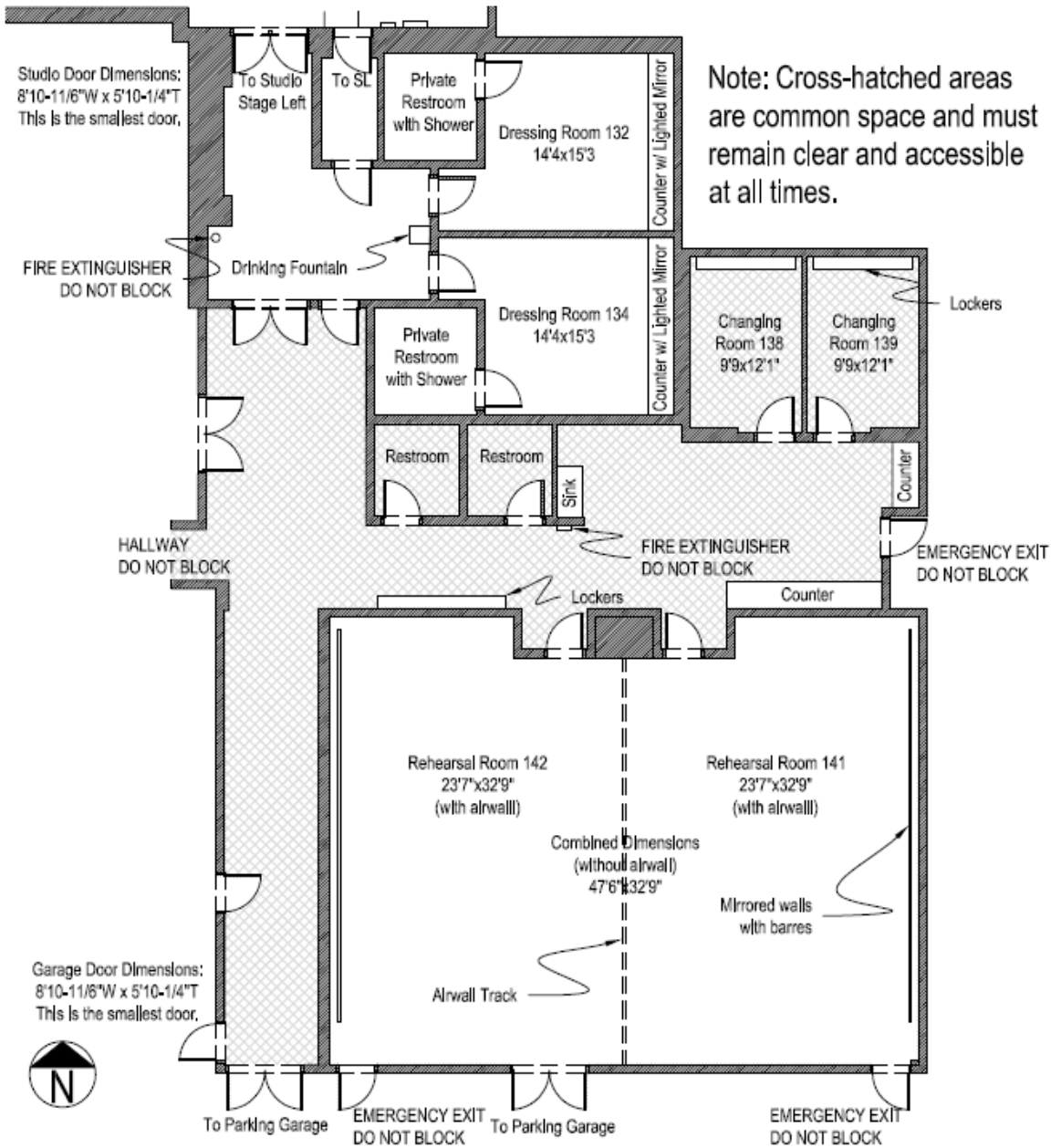
April 2, 2012

Drafter: S. Kattau



# THE CENTER FOR THE PERFORMING ARTS

Tania Castoverde Moskalkeno, President/CEO Michael Feinstein, Artistic Director  
 355 City Center Drive Carmel, IN 46032 P 317.660.3373 F 317.660.3374 TheCenterPresents.org



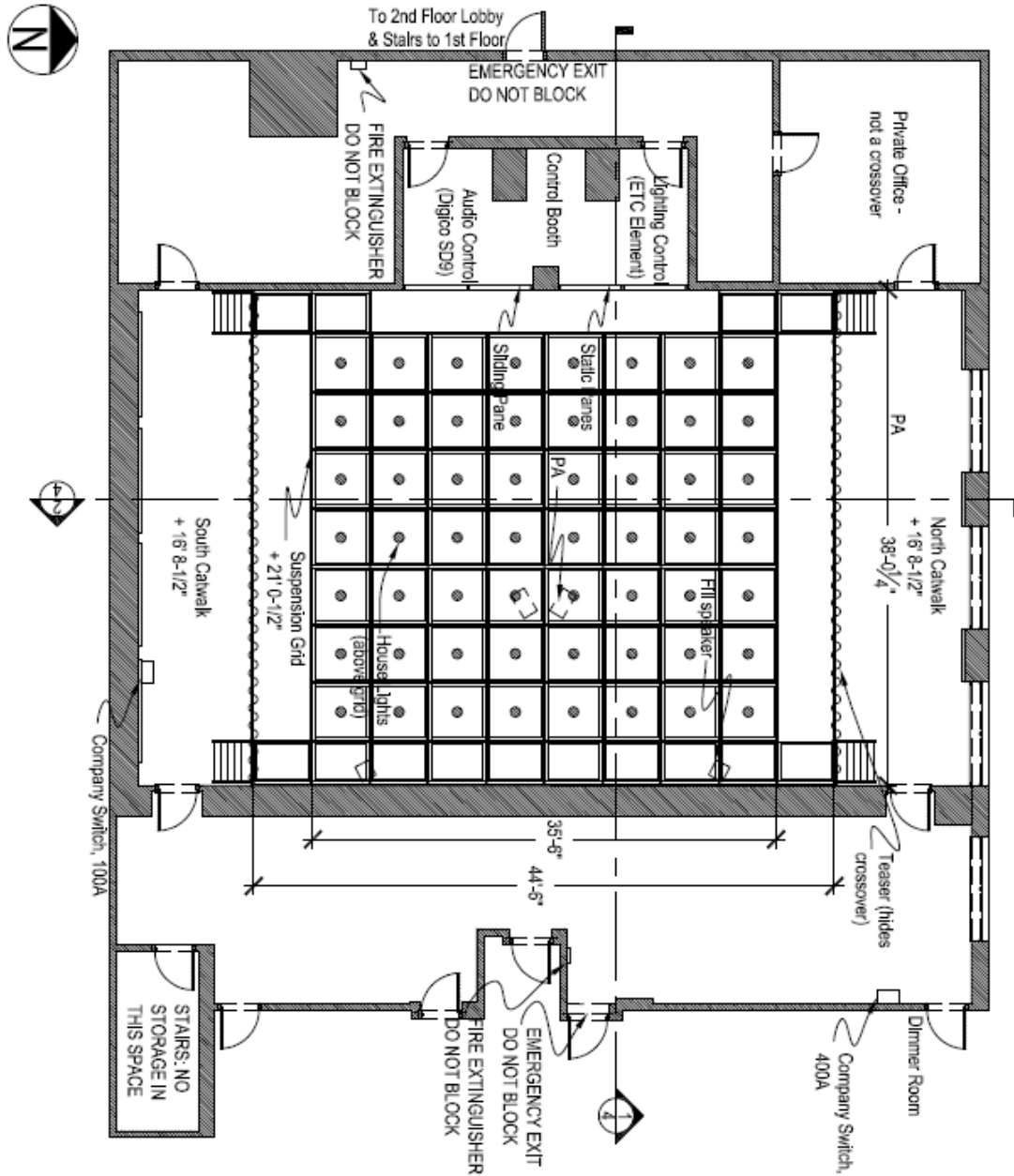
**Studio Support Space**  
 The Studio Theater  
 at The Center  
 for the Performing Arts

Scale:  $\frac{3}{32}'' = 1'-0''$   
 April 2, 2012  
 Drafter: S. Kattau



# THE CENTER FOR THE PERFORMING ARTS

Tania Castoverde Moskalenko, President/CEO Michael Feinstein, Artistic Director  
 355 City Center Drive Carmel, IN 46032 P 317.660.3373 F 317.660.3374 TheCenterPresents.org



2nd Floor Plan  
 The Studio Theater  
 at The Center  
 for the Performing Arts

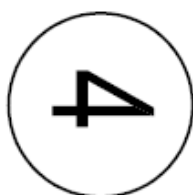
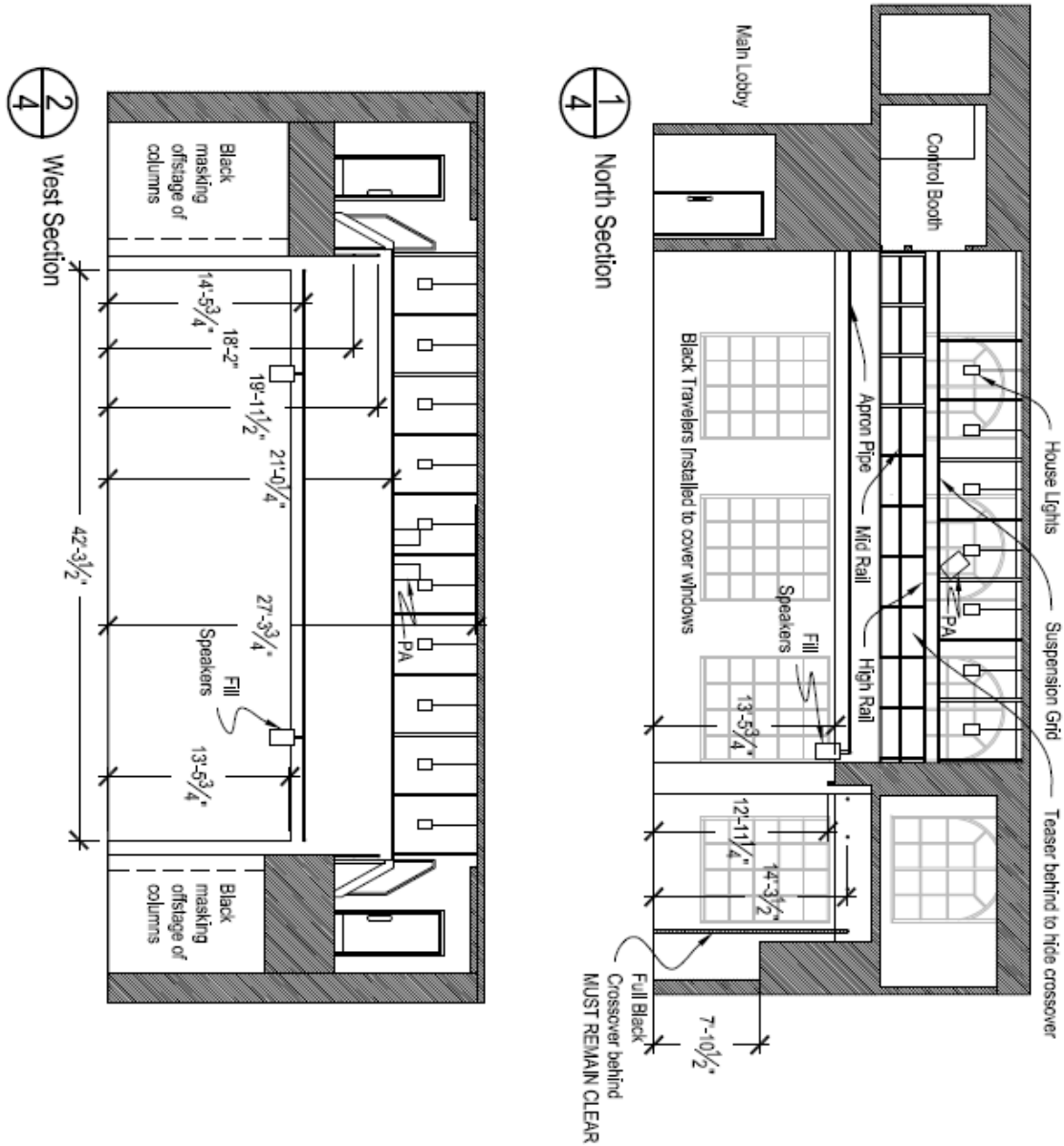
Scale:  $\frac{3}{32}'' = 1'-0''$   
 April 2, 2012

Drafter: S. Kattau



# THE CENTER FOR THE PERFORMING ARTS

Tania Castoverde Moskalenko, President/CEO Michael Feinstein, Artistic Director  
 355 City Center Drive Carmel, IN 46032 P 317.660.3373 F 317.660.3374 TheCenterPresents.org



## Section Views The Studio Theater at The Center for the Performing Arts

Scale:  $\frac{3}{32}'' = 1'-0''$   
 April 2, 2012

Drafter: S. Kattau

